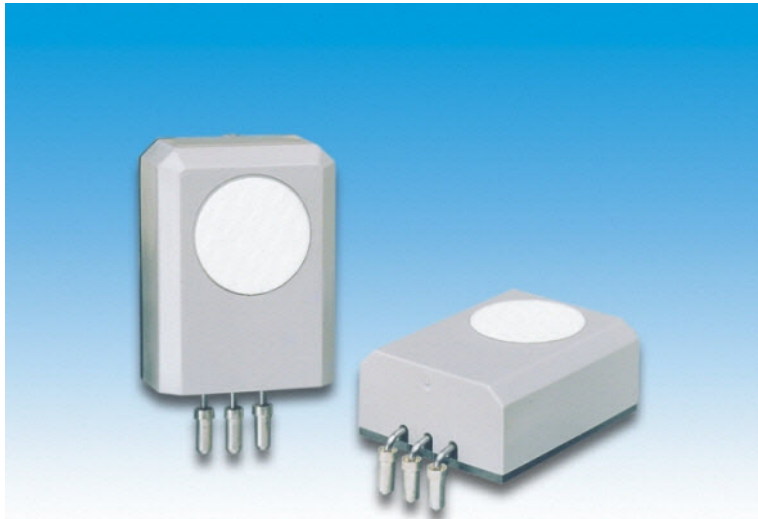




# NEMOTO & CO., LTD SENSOR DIVISION

## NAP-505 Electrochemical Carbon Monoxide Sensor

The NAP-505 Gas Sensor is a low-cost 3 Electrode Electrochemical cell designed for the detection and measurement of carbon monoxide in the range 0-1000ppm, in domestic carbon monoxide detectors, fire detectors and air quality monitors.



- **Highly specific to target gas**
- **Unaffected by humidity**
- **7 year lifetime**
- **Very low long term drift**
- **Low power consumption**
- **3-Electrode design for greater stability**
- **Compact, leak-proof enclosure**
- **Resistant to shocks and vibration**
- **Terminals may be soldered**

### Specifications NAP-505:

Detectable gas:	Carbon monoxide
Detection range:	0 – 1000 ppm
Output current:	40nA/ppm, +/- 10nA
Repeatability:	+/- 2%
Zero output in clean air:	less than +/-5ppm
Response time (T <sub>90%</sub> ):	< 30 seconds
Temperature drift (zero)	<10ppm (-20 to +50°C)
Long term output drift	<5% per year
Expected lifetime:	More than 7 years
Weight	2.6g

### Operating conditions:

Operating temperature:	-20°C to + 50°C
Humidity range (constant)	15-90% RH
Humidity range (intermittent)	0-99%% RH
Pressure:	0.9 – 1.1 atm
Recommended load resistance:	10 ohms
Bias voltage:	Not required
Recommended storage Temperature:	0-20°C
Recommended Storage Time:	6 months

More detailed information, covering all aspects of performance, including long term stability, repeatability, environmental tolerances to humidity, temperature, wind, shock, cross sensitivity to other gases, recommended circuitry, handling requirements and an explanation of the operating principles of the NAP-505, please consult the Handling Manual for the device, available on request.

NAP-505 datasheet January 2010

Nemoto has a policy of continuous development and improvement of its products. As such the specification for the device outlined in the data sheet may be changed without notice.

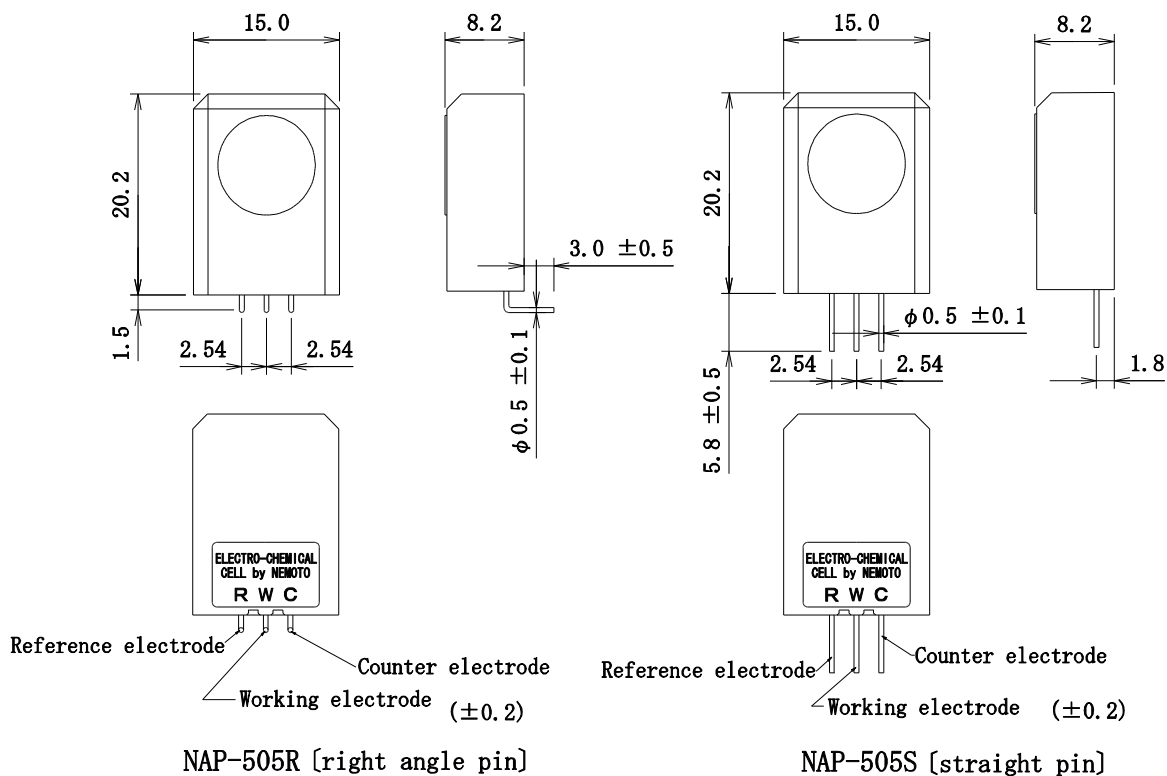
Nemoto (Europe) B.V.  
Strawinskylaan 647,1077 XX Amsterdam, Netherlands  
TEL: +31 20 670 3858  
FAX: +31 20 670 2709  
URL: <http://www.nemoto.co.jp>

# Dimensions and Variants

There are 4 variants of the NAP-505, to accommodate various connection preferences



## Direct Soldering Models



## Socket Models

