



# TECHNICAL INFORMATION SHEET NCP-180 Pellistor Gas Sensor

**Nemoto & Co., Ltd.**  
Sensor Division  
4-10-9, Takaido-higashi,  
Suginami-ku, Tokyo,  
JAPAN

## General Description

The Nemoto NCP-180 is a catalytic (pellistor) type flammable gas sensor supplied as a matched pair of elements mounted on TO4 size headers and protected by a metal can.

The sensor detects and measures the presence of flammable gases and vapours in air, in the range 0- 100% of the Lower Explosive Limit (LEL) of the gas or vapour being measured.

Designed as a sensing platform for use in fixed flammable gas detection systems, the NCP-180 exhibits excellent long term zero and sensitivity stability and a high level of resistance to catalytic poisons. The device is compatible with a wide range of commercially available Gas Detection Systems and remote flammable gas detection heads.

The highly automated manufacturing procedure employed by Nemoto results in a repeatable reliable sensor which, unlike similar devices, requires no trimming resistor to enable the detector to be matched with a compensator.

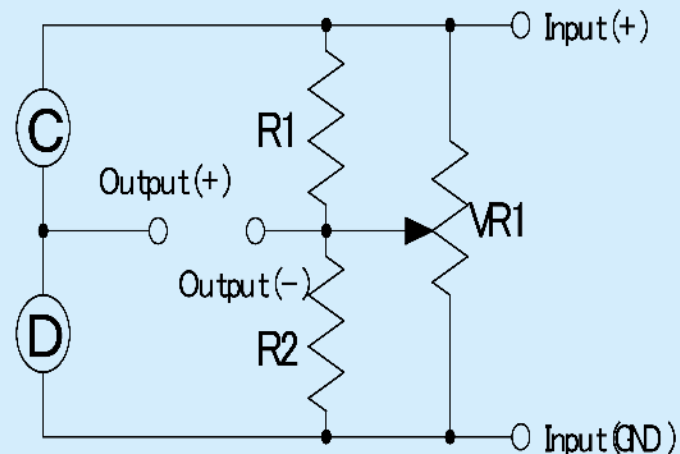


## Specifications:

Recommended Voltage:	2.6V +/- 0.1V
Current Drawn:	175 +/- 15mA
Zero Offset:	0mV +/- 25mV
Minimum Sensitivity:	20mV/% CH4/Air
Range:	0-100% LEL
Accuracy:	+/- 1%LEL(CH4)
<b>Maximum Long Term Drift:</b>	
Span:	< +/- 1% Signal/Month
Zero:	< +/- 0.5 mV/Month
Response Time:	T50: 3 sec    T90: 8 sec
Temperature Range:	-20°C to +60°C
Temperature Drift (zero):	(-20°C to +60°C): < +/- 5% LEL
Humidity:	0-100%RH, non-condensing
Humidity Response:	+/- 1%LEL
Linearity:	Effectively Linear to 100%LEL

## Recommended Circuit:

Note: The Function of R1 and R2 are to balance the bridge and so are largely arbitrary, but 200 Ω is recommended. The value of VR1 is recommended to be 3 KΩ, but may be varied according to the zero calibration window required.



Test data on drift, poisoning, temperature performance, linearity are available on the Characterisation Document.

Nemoto has a policy of continuous development and improvement of its products. As such the specification for the device outlined in the data sheet may be changed without notice.

ncp-180.ppp, issue 3, M a y 2 0 1 9

## Contact Information:

Europe & Africa Area  
Asia Area  
Americas Area

## Website

[www.nemoto.eu](http://www.nemoto.eu)  
[www.nemoto.co.jp](http://www.nemoto.co.jp)  
[www.nemoto.eu](http://www.nemoto.eu)

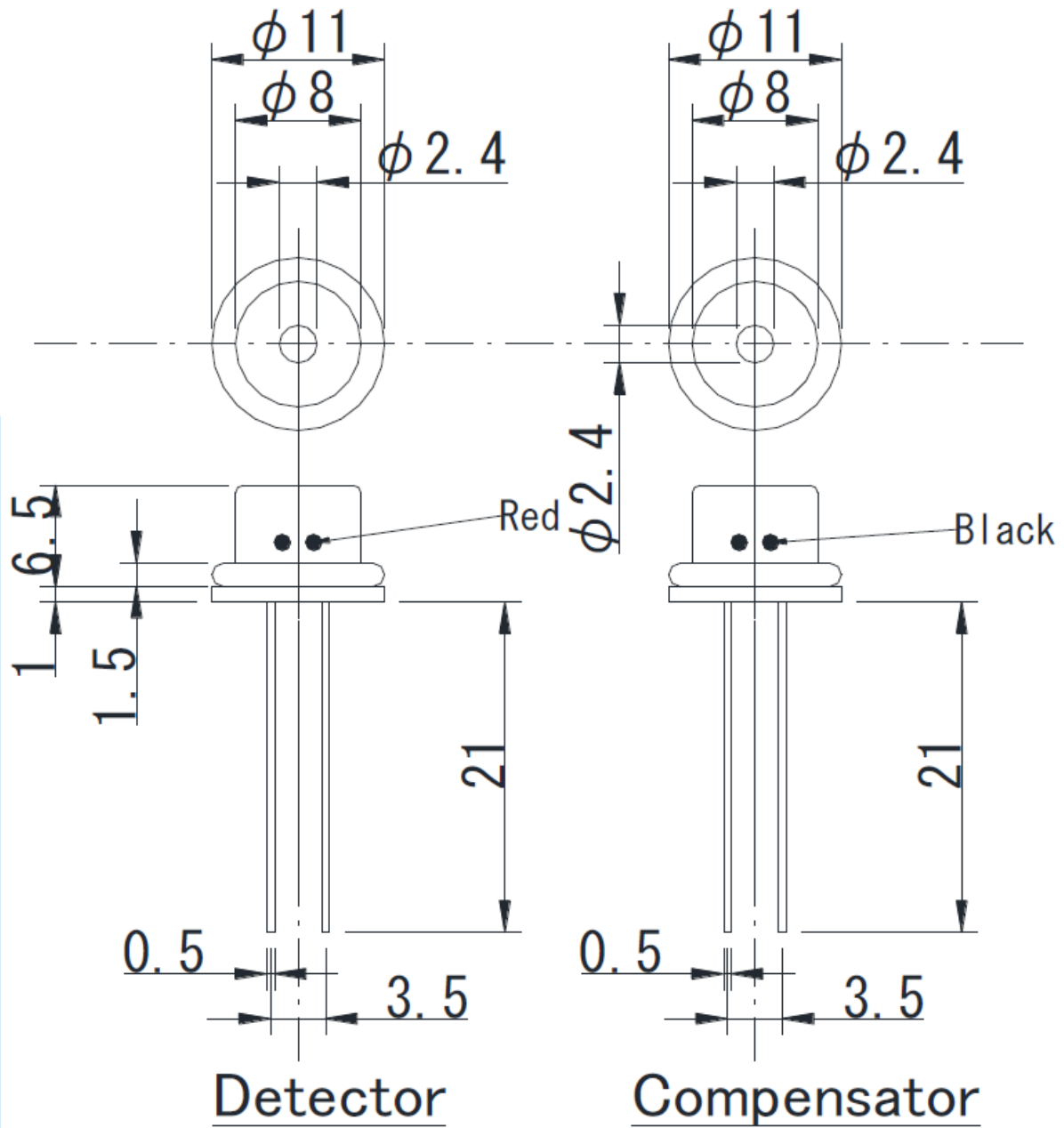
## email

[eusensor@nemoto.co.jp](mailto:eusensor@nemoto.co.jp)  
[sensor2@nemoto.co.jp](mailto:sensor2@nemoto.co.jp)  
[nasensor@nemoto.co.jp](mailto:nasensor@nemoto.co.jp)

## Telephone

+44 (0)1799 543968  
+81 3 3333 2760  
+1 604 761 7363

## Dimensions



( $\pm 0.2$ )

Test data on drift, poisoning, temperature performance, linearity are available on the Characterisation Document.

Nemoto has a policy of continuous development and improvement of its products. As such the specification for the device outlined in the data sheet may be changed without notice

nep-180.ppp, Issue 3, May 2019

### Contact Information:

Europe & Africa Area

Asia Area

Americas Area

### Website

[www.nemoto.eu](http://www.nemoto.eu)

[www.nemoto.co.jp](http://www.nemoto.co.jp)

[www.nemoto.com](http://www.nemoto.com)

### email

[eusensor@nemoto.co.jp](mailto:eusensor@nemoto.co.jp)

[sensor2@nemoto.co.jp](mailto:sensor2@nemoto.co.jp)

[nasensor@nemoto.co.jp](mailto:nasensor@nemoto.co.jp)

### Telephone

+44 (0)1799 543968

+81 3 3333 2760

+1 604 761 7363